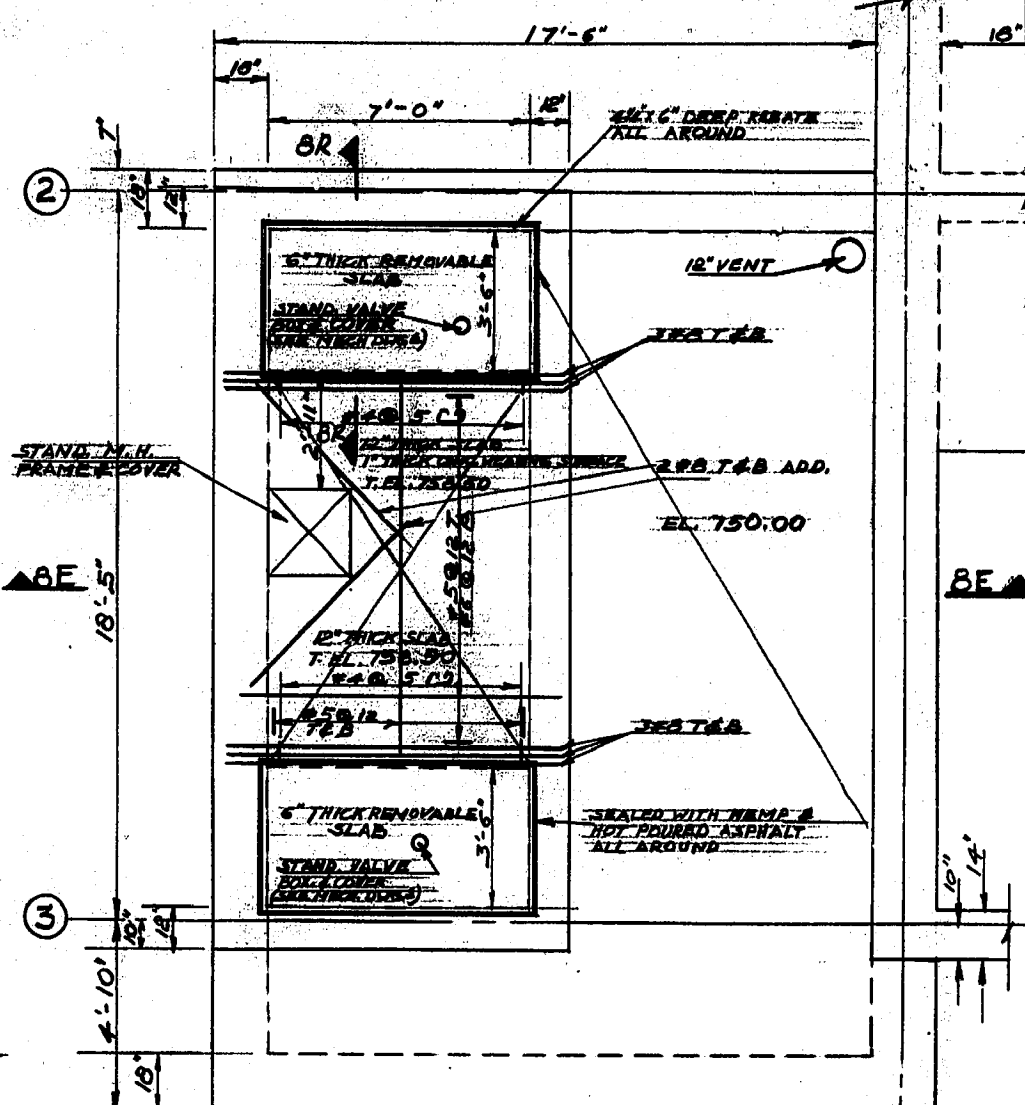
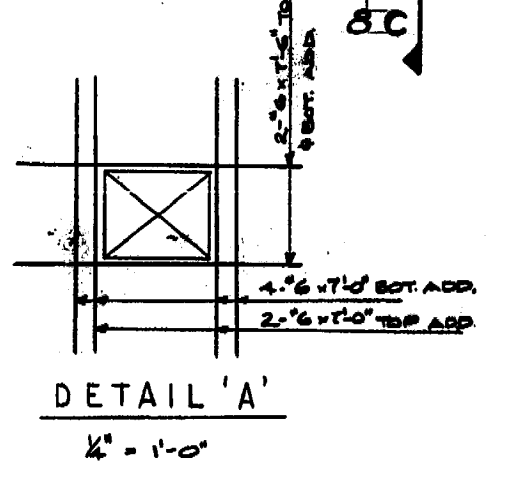
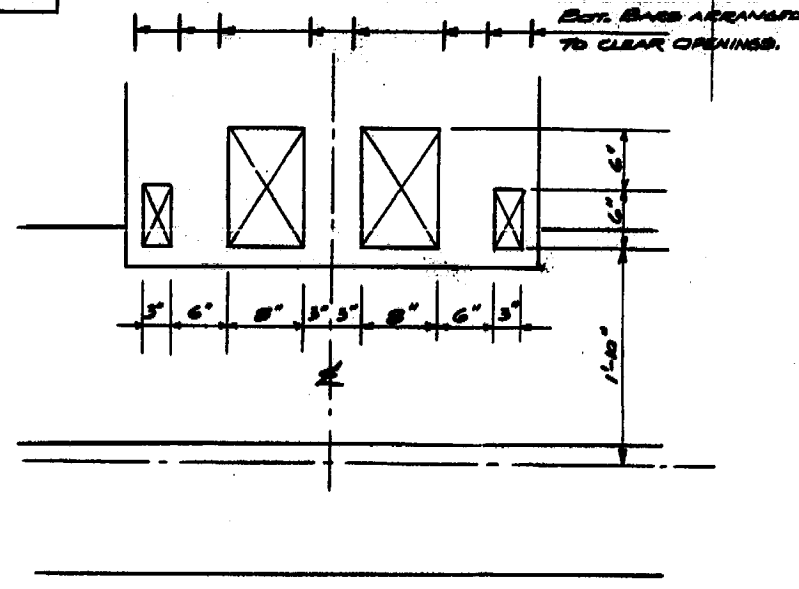
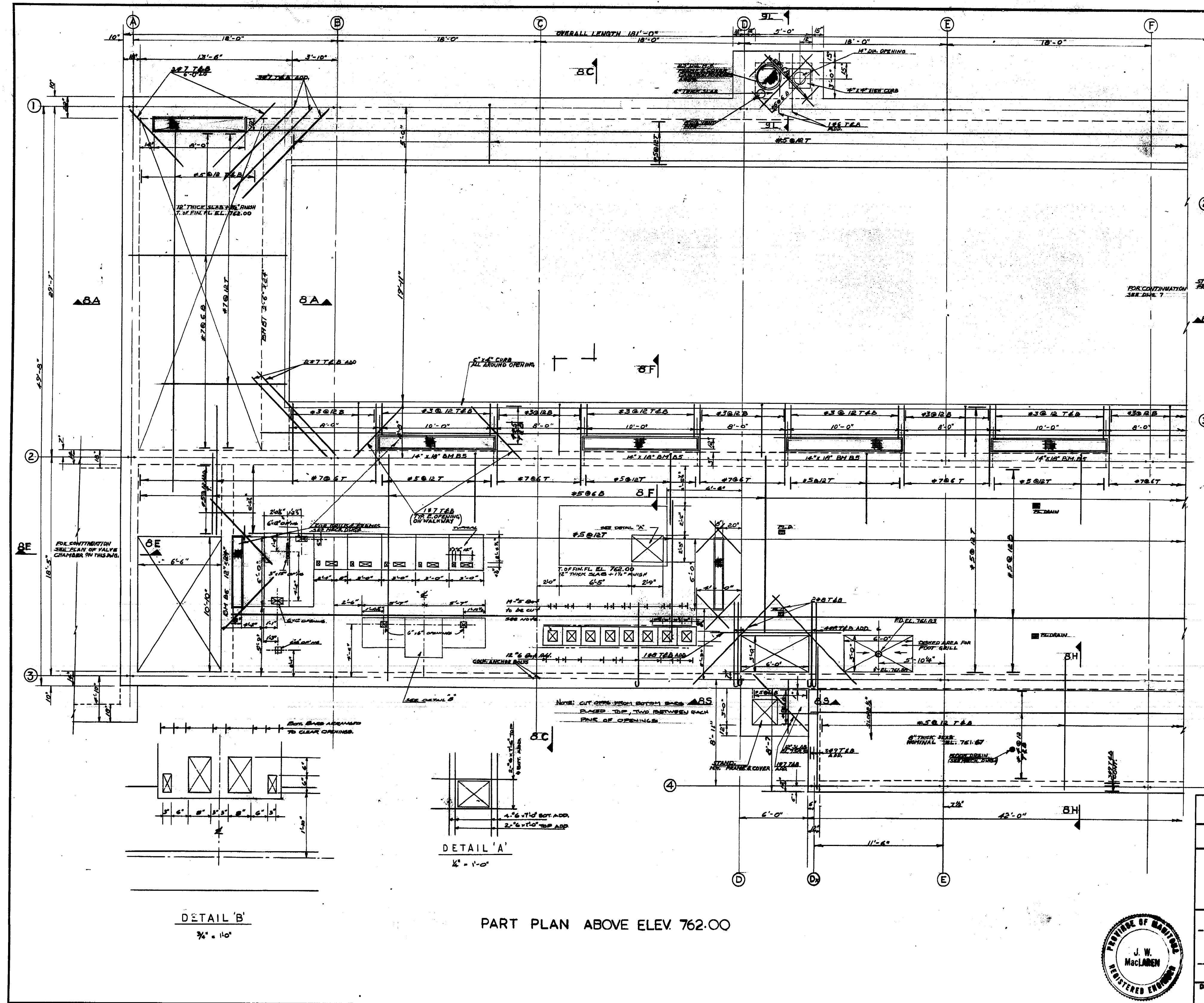
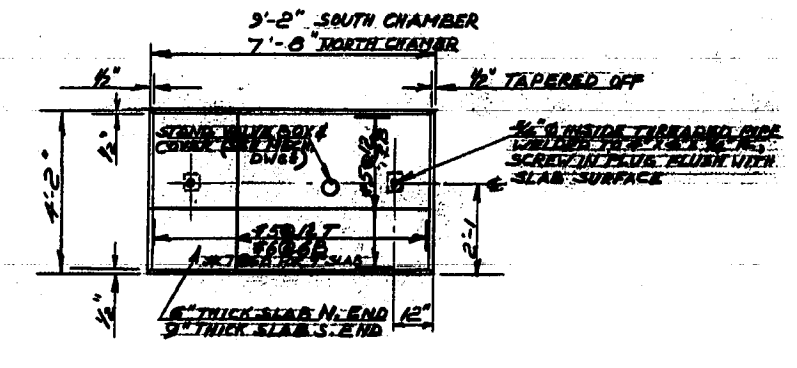


Ref. Drawing No. ME-13

DETAILS STRUCTURAL - PLAN ABOVE ELEV. 762.00 SHEET I



PLAN ABOVE ELEV. 750.00 OF NORTH END VALVE CHAMBER



PLAN OF REMOVABLE SLAB

PART PLAN ABOVE ELEV. 762.00

REVISED AS BUILT, JUNE - 1965	
THE METROPOLITAN CORPORATION OF GREATER WINNIPEG WATERWORKS AND WASTE DISPOSAL DIVISION	
METRO EAST PUMPING STATION AND RESERVOIR	
CONTRACT A - PUMPING STATION STRUCTURAL - PLAN ABOVE ELEVATION 762.00 SHEET I	
APPROVED <i>J. W. MacLaren</i> JAMES F. MACLAREN ASSOCIATES ENGINEERS TORONTO	APPROVED <i>[Signature]</i> DIRECTOR ENGINEER OF WATERWORKS METROPOLITAN CORPORATION OF GREATER WINNIPEG
DATE JUNE 22, 1962	SCALE 1/4" = 1'-0"
DWG. No. ME-13	OF 21

